

N.W. 1/4 OF THE S.W. 1/4  
SECTION 23, T.5N., R.2W., S.L.B. & M.

IN ROY CITY

SCALE 1" = 100'

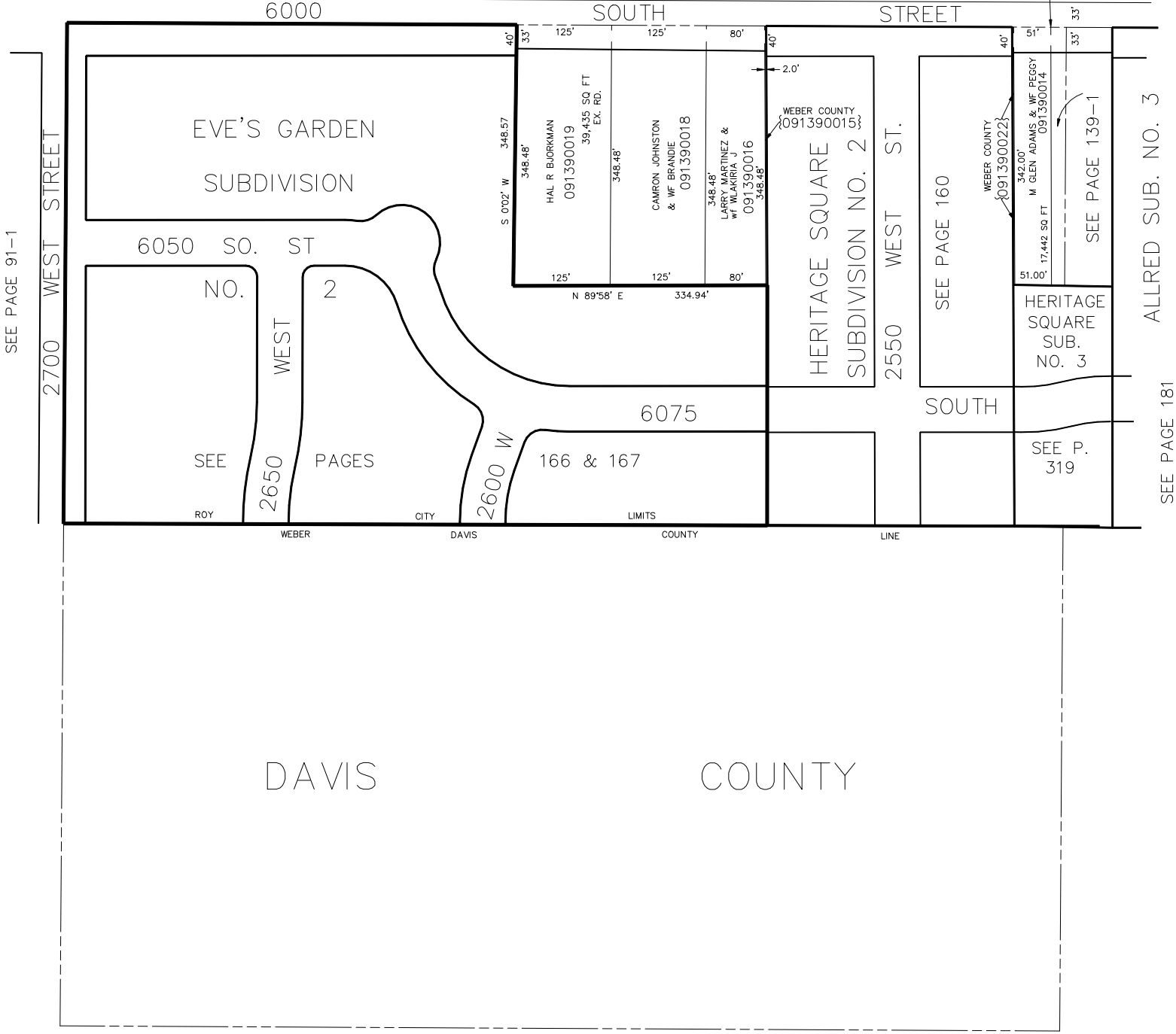
TAXING UNIT: 41

SEE PAGE 123

SEE PAGE 124

SEE PAGE 123

1335' W  
FR N.E. COR  
OF S.E. 1/4



SEE PAGE 91-1

2700 WEST STREET

EVE'S GARDEN  
SUBDIVISION

6050 SO. ST  
NO. 2

SEE

2650 WEST

PAGES

ROY

WEBER

CITY

DAVIS

2600 W

166 & 167  
LIMITS

COUNTY

DAVIS COUNTY

2550 WEST ST.

HERITAGE SQUARE  
SUBDIVISION NO. 2

SOUTH

SEE PAGE 160

HERITAGE  
SQUARE  
SUB.  
NO. 3

SEE P.  
319

SEE PAGE 139-1

SEE PAGE 181

ALLRED SUB. NO. 3